

**Tabled Papers – Children & Young People’s Scrutiny Panel**

4<sup>th</sup> January 2024

This page is intentionally left blank

**Welcome to the  
Haringey Safeguarding Children  
Partnership Annual Report  
April 2022 – March 2023  
*Safeguarding is Everyone's Business***



# What is the HSCP?

- The Children and Social Work Act 2017 replaced LSCB's with new local safeguarding arrangements, led by the three statutory safeguarding partners; the Local Authority, Integrated Care Board (formerly CCG) and Police, who have a shared and equal duty to ensure that these new arrangements effectively safeguard and promote the welfare of children
- The arrangements are subject to independent scrutiny by an independent Chair and Scrutineer.
- The HSCP must publish a yearly report setting out what has been achieved, what challenges were encountered during the year and what is the forward planning for the coming year.

# Partnership Leads

- Ann Graham (Director Children's Services),
- Stuart Smillie (Detective Superintendent),
- David Pennington (Director of Safeguarding for NCL ICB)

# HSCP Vision and Objective

## Vision

The partnership will provide the strategic leadership, vision and influence which ensures:

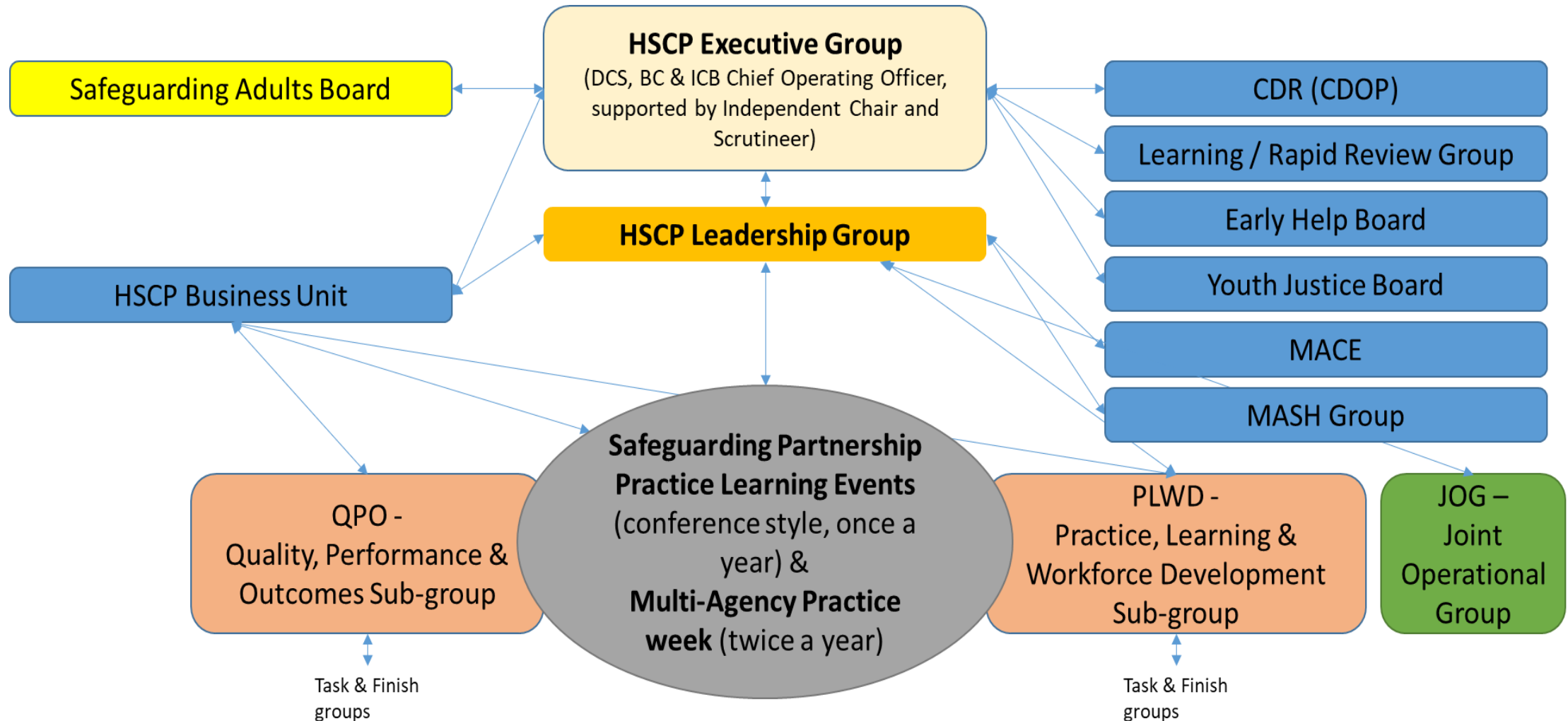
- At every opportunity, the lived experience of children and young people is integral to how we safeguard and protect
- There are improved outcomes through strengthening partnership workforce and community resilience
- Our relationship-based practice is strengthened, demonstrating continuous improvement

## Objective

The objective of the HSCP multi-agency safeguarding arrangements is to support and enable local agencies to work together in a system that:

- Promotes excellent practice across the partnership as the norm
- Partner agencies hold one another to account
- There is early identification of emerging safeguarding concerns and trends
- Information is shared effectively
- Promotes community confidence

# HSCP structure



# Funding

- Working Together 2018 states the three safeguarding partners should agree on the level of funding secured from each partner (which should be equitable and proportionate)
- 'In-kind' contribution included secondment of a police staff for two days a week and other partners have supported HSCP subgroups, i.e. Health designates Chair the Quality, Performance and Outcomes & Planning, Learning and Workforce Development Sub-groups
- Further "In-kind" contribution included all partners facilitating safeguarding training on a range of topics sharing their expertise and knowledge.



# Key Safeguarding Performance Data

- We received 12,960 contacts compared to 13,079 contacts received in 2021/22. The highest proportion of contacts come from the police (34%), followed by health services (18%) and schools (17%).

12,960  
Contacts



- 3,456 referrals were received in the last 12 months compared to 3,379 referrals received in 2021/22.
- Of the referrals received, 9% were rereferrals. Lower in comparison to 2021/22 when the re-referral rate was 16%

3,456  
Referrals



- 1,296 children were the subject of a Section 47 enquiry in 2022/23.
- This equates to a rate of 218 children with a S47 enquiry per 10,000 children in 2022/23, an increase of 22% on the rate last year (196).

1,296 S47



- 3,131 assessments were completed in 2022/23 compared to 2,873 in 2021/22.
- 80% of assessments were completed within 45 working days; down on 2021/22 when 93% were completed within 45 working days.

3,131  
Assessments



- 1,463 Early Help cases were closed with a successful outcome in 2022/23.
- 70% of the families engaging with EH were closed with outcomes achieved or signposted to other agencies, slightly higher than last year (61%).

1,463  
Early Help



- There were 4,230 Children in Need who had received a service at any point within 2022/23 compared with 4,168 CIN in 2021/22. On 31/03/2023 2,225 children had an open of Children in Need episode.

4,230 CIN



- 233 children were the subject of a Child Protection Plan at 31 March 2023. A 55% increase from the number of children at the end of 2022 (178).
- 278 children started and 222 ceased a CP plan in 2022/23.

233 CP



- At 31 March 2023 there were 370 Looked After Children.
- As at March 2023 the rate of LAC was 69 per 10,000 children in Haringey, down from 71 per 10,000 in 2021/22.

370 LAC



# Key Activity – S11 Audits

## Section 11 Audits

- In total, eight organisations were requested to submit a return and every organisation fulfilled their responsibility by submitting their completed audit returns. The HSCP introduced a number of support and challenge sessions, chaired by the HSCP Independent Chair and Scrutineer, supported by the Strategic Safeguarding Partnership Manager and Strategic Safeguarding Partnership Co-ordinator. Agency reports were scrutinised and representatives were asked to reflect on their safeguarding arrangements.
- Overall, the partnership continues to demonstrate a strong commitment to safeguarding. The S11 audits illustrated a desire to deliver best practice around safeguarding in order to achieve positive outcomes for Haringey's children, young people and families.
- A S11 report has been produced for the HSCP Executive group and wider partnership.

# Key Activity – Audits & Practice Weeks

- Partners actively engaged in a range of Multi-agency audits and the learning from the audits has been disseminated across the partnership
- A Multi-agency Practice Week was undertaken in February / March 2023 and was exceptionally well attended and received very positive feedback
- The HSCP has agreed to introduce a new cycle of audits for 2023/24, as well as two planned practice weeks per year

# Priorities for 2022/23

**The Partnership priorities over the next year will be based on the following themes:**

- Children living with mental health issues
- Prevention and early intervention
- Older children in need of help and protection, and contextual safeguarding, including exploitation

**The Partnership focus will be:**

- Measuring impact linked to practice
- A strong evidence base
- Workforce development; and sustainability

**Additional areas of focus and synergy include:**

- Transitional Safeguarding with the Safeguarding Adults Board
- Neglect with the Early Help and Health & Wellbeing Boards
- System for managing the risk to children who go missing.

# Highlights of the year

- MASH was recognised as a strength, with a desire to build on this strength going forward
- The expertise and approachability of the LADO was recognised across the partnership
- The commitment of senior managers to safeguarding was evident
- The development of the Neglect guidance & Toolkit and dedication by professionals to embed this in their respective organisations.
  
- Although not directly as a result of the work by the HSCP a special recognition should be made to Haringey's Children's Social Care for their Ofsted grading as "Good"

This page is intentionally left blank